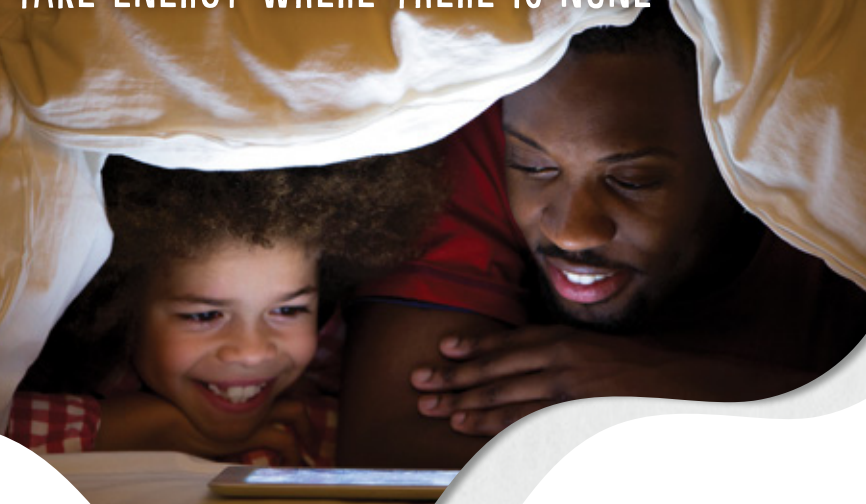


WE TAKE ENERGY WHERE THERE IS NONE



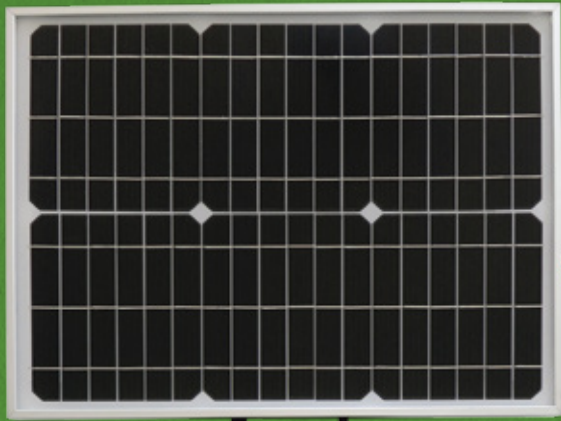
Pinlite[®]

WHAT IS PINLITE?

PinLite is a solar microstation that takes energy to where there is none.

PinLite will permit you to illuminate your space and you will be able to charge you mobile devices easily.

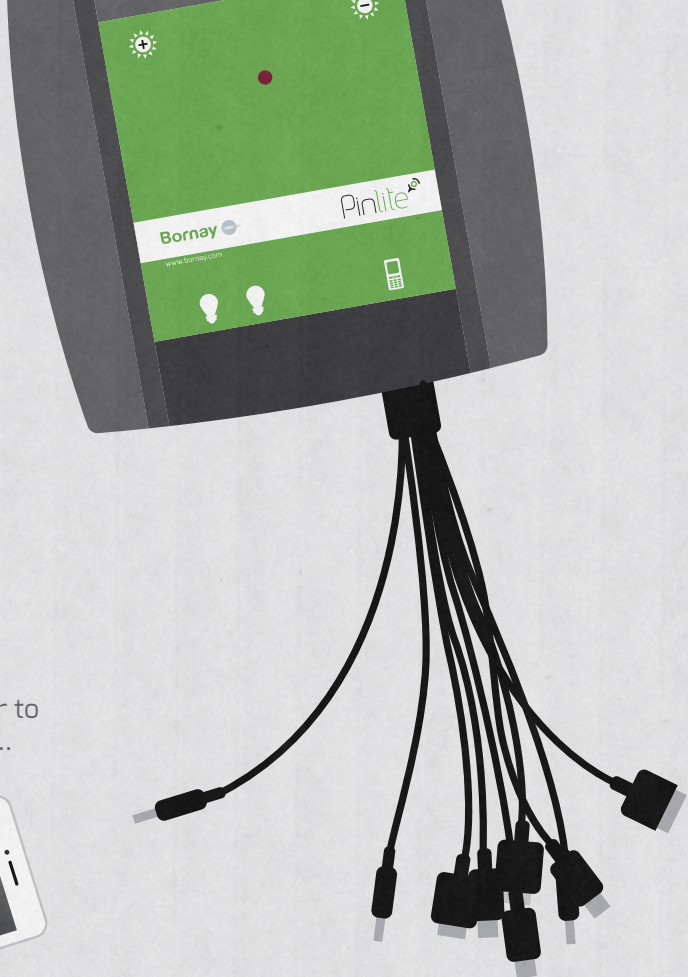
With PinLite you'll meet basic lighting needs of an isolated area, illuminating a mountain lodge, read at night in a tent or charge your mobile with ease to communicate wherever you are.



WHAT
WORKS FOR
PINLITE?

CHARGE A MOBILE DEVICE

To communicate, to be
reachable by your family or to
read a book on your tablet...



WHAT WORKS FOR PINLITE? ILLUMINATE



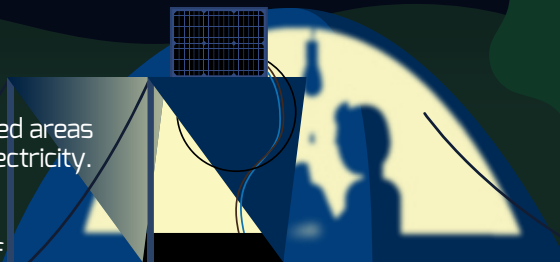
Basic Lighting of populated areas
without any access to electricity.

A field house.

A shelter in the middle of
the mountain.

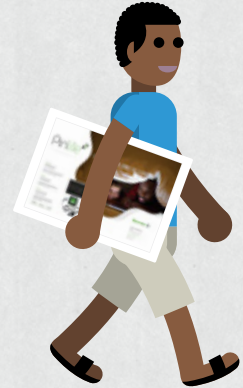
A tent.

A funny conversation in the dark
of the night.

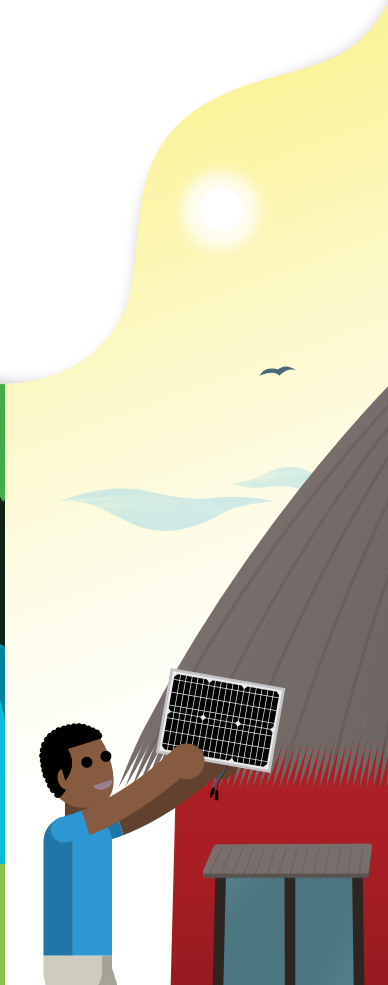
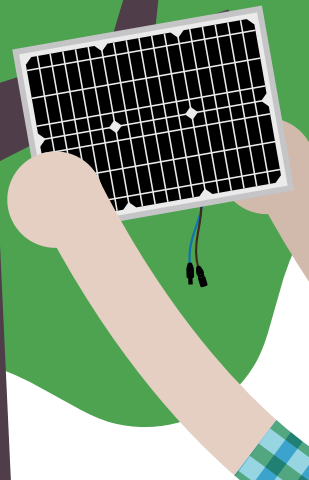


PINLITE ADVANTAGES

EASY TO TRANSPORT



EASY ASSEMBLY



QUALITY OF LIFE

PinLite is an ideal product:

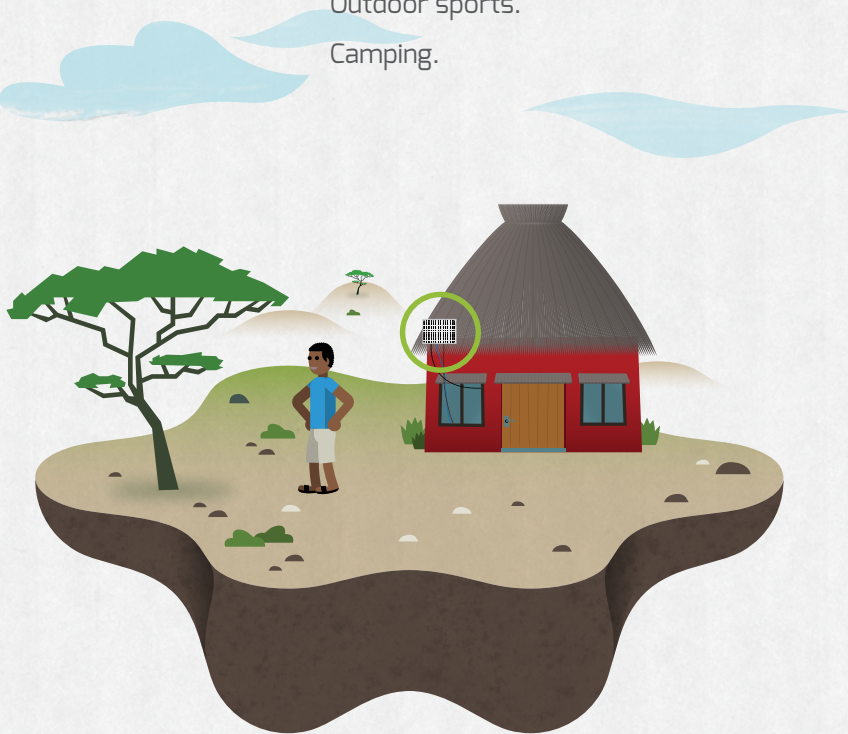
Populated areas without electricity.

Field sites with basic lighting needs.

Areas with basic communication needs.

Outdoor sports.

Camping.



SPECIFICATIONS

PINLITE MICRO ESTATION

Input

Solar Module	20 Wp max.
--------------	------------

Voltage	14-22 Vcc
---------	-----------

Connectors	+ / - MC3 type
------------	----------------

USB Output

Voltage	5 Vcc
---------	-------

Current	1 Amp max.
---------	------------

RJ10 Output (x2)

Voltage	12 Vcc
---------	--------

Current	0,5 Amp max.
---------	--------------

Battery

type	Li-Ion
------	--------

Voltage	12 Vcc
---------	--------

Capacity	9 Amp
----------	-------

Dimensions	210 x 210 x 45 mm
------------	-------------------

Weight	850 grs
--------	---------

Autonomy	2 bulbs + mobile = 8h 1 bulb + mobile = 16h
----------	--

Package

Dimensions	60 x 40 x 10 cm
------------	-----------------

Weight	4,5 Kg
--------	--------

SOLAR MODULE

Power (Pmax)	20 Wp ± 3%
--------------	------------

Efficiency	15%
------------	-----

Nominal voltage (Vmpp)	18 Vcc
------------------------	--------

Open circuit voltage (Voc)	21,2 Vcc
----------------------------	----------

Nominal current (Impp)	1,11 A
------------------------	--------

short circuit current (Isc)	1,16 A
-----------------------------	--------

Mechanical

Cell type	Monocrystalline 2 x 18
-----------	------------------------

Dimensions	350 x 495 x 25 mm
------------	-------------------

Weight	2,2 Kg
--------	--------

Glass	Tempered 3,2 mm
-------	-----------------

Frame	Anodic
-------	--------

BULB

Power	3 W
-------	-----

Voltage	12 Vcc
---------	--------

Leds	3 x Edison 45 x 45 mm
------	-----------------------

Bulb cap	Aluminium with interruptor
----------	----------------------------

Wire	4 m
------	-----

Connector	RJ 10
-----------	-------

NATURE GIVES YOU THE ESSENTIAL
WE DO THE REST

Bornay 

www.bornay.com

www.pinlite.eu



Printed in recycled paper.