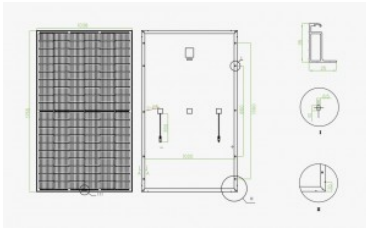
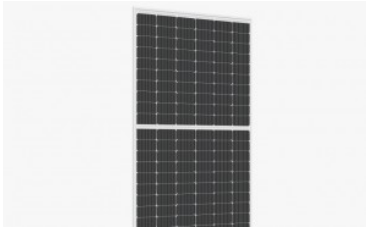


SR-M660HLP MONO

Sunrise Energy Co., a Leading PV Company in Solar Panel Manufacturing ,Solar Project Investment and Solar System Integration.



Main advantage of Sunrise Energy SR-M660HLP solar modules:

- PERC Half-Cut monocrystalline cells
- 0 + 5W positive tolerance guarantee
- The use of high light transmission and reflection reduction 3.2mm glass, low light environment electric performance is stronger
- PID attenuation can be minimized under conventional conditions
- TUV test certification
- The Half cut cell size M6 of 166 x 83 mm, and using 9 bus bar, which can eliminate the chamfering loss of single crystal



Cost Savings



Combined technology with 9 Bus Bar.



Half Cut cells technology, reduce the electrical resistance.



Mechanical resistance.

- Up to 5400 Pa for snow.
- Up to 2400 Pa for wind.

Positive tolerance 0+5 W



PID Resistance.

SPECIFICATIONS

	SR-M660HLP 360 W	SR-M660HLP 365 W	SR-M660HLP 370 W	SR-M660HLP 375 W
Number of cells	120 (6 x 20)			
Cell type	Monocrystalline - 166 x 35 mm			
Maximum system voltage	1500 Vdc			

Electrical Specifications *

		STC *	NOCT **	STC *	NOCT **	STC *	NOCT **	STC *	NOCT **
Maximum power	Pmax	360 Wp	266,59 Wp	365 Wp	270,29 Wp	370 Wp	273,99 Wp	375 Wp	277,69 Wp
Tolerance		0 / +5W	0 / +5W	0 / +5W	0 / +5W	0 / +5W	0 / +5W	0 / +5W	0 / +5W
Maximum power voltage	Vmpp	33,69 V	31,08 V	33,89 V	31,28 V	34,09 V	31,48 V	34,29 V	31,66 V
Open circuit voltage	Voc	40,92 V	38,18 V	41,12 V	38,38 V	41,32 V	38,48 V	41,56 V	38,70 V
Maximum power current	Impp	10,69 A	8,55 A	10,78 A	8,62 A	10,86 A	8,69 A	10,94 A	8,75 A
Short circuit current	Isc	11,22 A	9,01 A	11,30 A	9,07 A	11,39 A	9,15 A	11,46 A	9,21 A
Module efficiency		19,77 %		20,04 %		20,32 %		20,59 %	

Temperature Ratings

Open circuit voltage coefficient	Tk Voc	-0,285 % / °C
Short circuit current coefficient	Tk Isc	0,055 % / °C
Power coefficient	Tk W	-0,365 % / °C

Other specifications

Dimensions	1755 x 1038 x 35 mm
Weight	20 Kgr
Connection box	IP68 - 3 diodes Junction box
Cable	Cable 4 mm ² - 300 mm
Connector	MC4 or MC4 compatible

* STC (Standard Test Conditions: 1000 W/m², 25° C, AM 1,5)

** NOCT (Normal Operating Test Conditions: 800 W/m², 20° C, Windspeed 1 m/s)

DOWNLOADS

CATÁLOGO SR-M660HLP

 [SR-M660HLP Catalogo Bornay.pdf](#) Size: 2.72 MiB

SR-M660HLP BROCHURE

 [SR-M660HLP Brochure Bornay.pdf](#) Size: 2.73 MiB

TUV+CE HLP SERIES

 [TUV+CE HLP Series.pdf](#) Size: 186.39 KiB

IEC60068 HLP SERIES

 [IEC60068 HLP Series.pdf](#) Size: 107.25 KiB

IEC61701 HLP SERIES

 [IEC61701 HLP Series.pdf](#) Size: 103.29 KiB

IEC62716 HLP SERIES

 [IEC62716 HLP Series.pdf](#) Size: 105.93 KiB

IEC62804 HLP SERIES

 [IEC62804 HLP Series.pdf](#) Size: 108.85 KiB