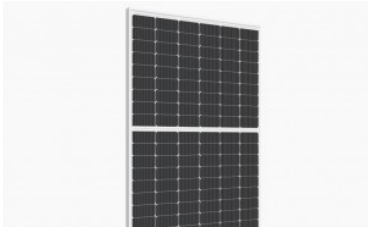


SR-54MHLPRO MONO

Sunrise Energy Co., a Leading PV Company in Solar Panel Manufacturing ,Solar Project Investment and Solar System Integration.



Sunrise SR-M54HLPO Bornay

Excellent technical advantages and system design scheme to achieve high reliability, power generation effective gain and EPC cost reduction. Products can match different installation conditions, taking into account high adaptability and high compatibility.

With mature support and inverter scheme, customized design for industrial and commercial and centralized ground power stations.

Product advantage of Sunrise Energy SR-M672HLPro solar modules:

- 0 +5 W positive tolerance guarantee
- The use of high light transmission and reflection reduction 3.2mm glass, low light environment electric performance is stronger
- PID attenuation can be minimized under conventional conditions
- Salt mist / Ammonia / Dust and Hail resistance
- IEC61215 / IEC61730 / ISO9001 / ISO14001 / ISO45001 Certifications
- The Half cut cell size M10 PERC is 182 x 91 mm, and using Multiple Bus Bar, which can eliminate the chamfering loss of single crystal
- Reduce BOS cost increase ROI



Hight Power Output.



Better Low-Light performance..



MBB Half Cut Cell with PERC Technology



Less Shading Effect



0 + 5 W Positive Tolerance



PID Resistance

SPECIFICATIONS

SR-M54HLPro 410 W SR-M54HLPro 415 W SR-M54HLPro 420 W SR-M54HLPro 425 W

Number of cells	108 (6 x 18)								
Cell type	M10 Monocrystalline - 182 x 91 mm (Multiple Bus Bar)								
Maximum system voltage	1500 Vdc								

Electrical Specifications *

		STC *	NOCT **	STC *	NOCT **	STC *	NOCT **	STC *	NOCT **
Maximum power	Pmax	410 Wp	305,13 Wp	415 Wp	308,86 Wp	420 Wp	312,58 Wp	425 Wp	316,30 Wp
Tolerance		0 / +5 W		0 / +5 W		0 / +5 W		0 / +5 W	
Maximum power voltage	Vmpp	30,93 V	28,78 V	31,126 V	28,95 V	31,31 V	29,13 V	31,15 V	29,31 V
Open circuit voltage	Voc	37,47 V	35,37 V	37,70 V	35,58 V	37,93 V	35,80 V	38,16 V	36,02 V
Maximum power current	Impp	13,26 A	10,60 A	13,34 A	10,67 A	13,42 A	10,73 A	13,5 A	10,80 A
Short circuit current	Isc	13,96 V	11,27 V	14,04 V	11,34 V	14,13 V	11,41 V	14,21 V	11,47 V
Module efficiency		21,01 %		21,26 %		21,52 %		21,76 %	

Temperature Ratings

Open circuit voltage coefficient	Tk Voc			-0,282 % / °C	
Short circuit current coefficient	Tk Isc			0,05 % / °C	
Power coefficient	Tk W			-0,348 % / °C	
Operating Temperature	NOCT			45 °C ±2 °C	

Other specifications

Dimensions	1723 x 1133 x 30 mm								
Weight	20 Kgr.								
Connection box	IP67 - 3 diodes Junction box								
Cable	Cable 4 mm2 - 1200 mm								
Connector	MC4 or MC4 compatible								

* STC (Standard Test Conditions: 1000 W/m2, 25° C, AM 1,5)

** NOTC (Normal Operating Test Conditions: 800 W/m2, 20° C, Windspeed 1 m/s)

DOWNLOADS

SR-M54HLPRO CATÁLOGO BORNAY

 [SR-M54HLPro BORNAY ESP.pdf](#) Size: 1.69 MiB


SR-M672HLPRO BORNAY BROCHURE

 [SR-M54HLPro BORNAY ENG.pdf](#) Size: 1.7 MiB

SR-54M-NHLPRO D CRISTAL-CRISTAL

 [N-type M10 108 cells 430~450w CRISTAL Bornay.pdf](#) Size: 1.53 MiB

SR-54M-NHLPRO D CRISTAL-CRISTAL

 [N-type M10 108 cells 420~440w Full black Bornay.pdf](#) Size: 1.16 MiB