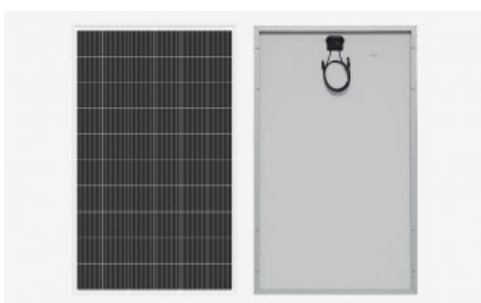


Skype

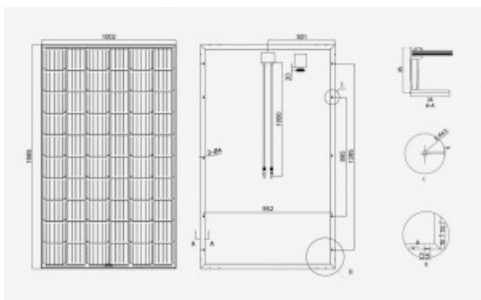


SR-M660L MONO

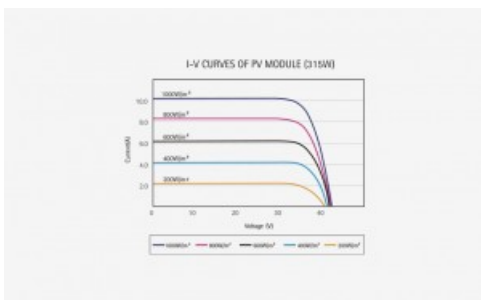
Sunrise Energy Co., a Leading PV Company in Solar Panel Manufacturing ,Solar Project Investment and Solar System Integration.



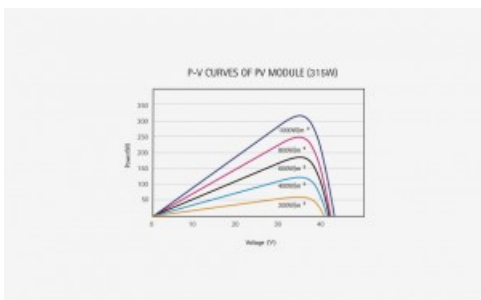
Sunrise SR-M660L



Sunrise SR-M660L

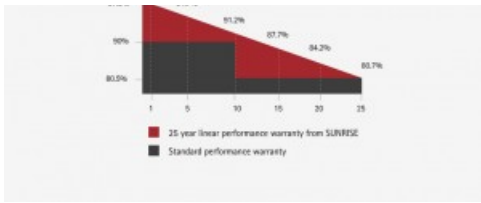


Sunrise SR-M660L



Sunrise SR-M660L





Sunrise SR-M660L

Product advantage of Sunrise Energy solar modules:

- 0-3% positive tolerance guarantee
- The use of high light transmission and reflection reduction 3.2mm glass, low light environment electric performance is stronger
- PID attenuation can be minimized under conventional conditions
- TUV test certification
- The single cell size is increased to 158.75*158.75(mm), which can eliminate the chamfering loss of single crystal



PID Resistance



5 Bus Bar solar Cell with PERC Technology.



High Power Output



Strengthened Mechanical

- Support 5400 Pa snow load.
- Support 2400 Pa wind load.



0-3 % Positive Tolerance





Better Low-light performance.

SPECIFICATIONS

	SR-M660L 315 W	SR-M660L 320 W
Number of cells	60	
Cell type	Monocrystalline - 158,75 x 158,75 mm	
Maximum system voltage	1000 Vdc	

Electrical Specifications *

		STC *	NOCT **	STC *	NOCT **
Maximum power	Pmax Wp	315 Wp	237 Wp	320 Wp	240 Wp
Tolerance		0/ +3%	0/ +3%	0/ +3%	0/ +3%
Maximum power voltage	Vmpp	33,21 V	31,23 V	33,41 V	31,42 V
Open circuit voltage	Voc	40,64 V	37,59 V	40,88 V	37,82 V
Maximum power current	Imp	9,49 A	7,53 A	9,58 A	7,61 A
Short circuit current	Isc	10,06 A	8,35 A	10,15 A	8,43 A
Module efficiency		18,88 %		19,18 %	

Temperature Ratings

Open circuit voltage coefficient	Tk Voc	-0,282 % / °C
Short circuit current coefficient	Tk Isc	0,041 % / °C
Power coefficient	Tk W	-0,387 % / °C
Operating Temperature	NOCT	45 °C ±2 °C

Other specifications

Dimensions	1665 x 1002 x 35 mm
Weight	19 Kgr.
Connection box	IP67 - 3 diodes Junction box
Cable	Cable 4 mm ² - 1000 mm

Connector	MC4 or MC4 compatible
-----------	-----------------------

* STC (Standard Test Conditions: 1000 W/m², 25° C, AM 1,5)

** NOTC (Normal Operating Test Conditions: 800 W/m², 20° C, Windspeed 1 m/s)

DOWNLOADS

CATÁLOGO GENERAL 2020

 [Catalogo-Bornay-0520.pdf](#) (21.51 MiB)
Size: 21.51 MiB

PANELES SOLARES SR-M660L

 [SR-M660L.pdf](#) (452.31 KiB)
Size: 452.31 KiB

SUNRISE TUV CERTIFICATE

 [TUV Sunrise 20191015.pdf](#) (3.97 MiB)
Size: 3.97 MiB
