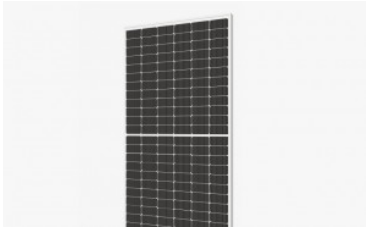
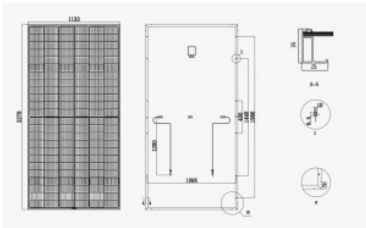


# SR-72MHLPROD

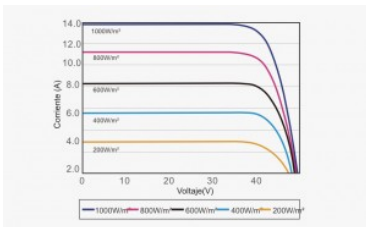
Sunrise Energy Co., a Leading PV Company in Solar Panel Manufacturing ,Solar Project Investment and Solar System Integration.



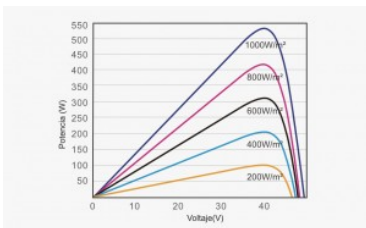
Panel Sunrise SR-72MHLPro



Panel Sunrise SR-72MHLPro



Panel Sunrise SR-72MHLPro



Panel Sunrise SR-72MHLPro

**Product advantage of Sunrise Energy SR-M672HLPro solar modules:**

- 0 +5 W positive tolerance guarantee
- Glass - Glass Bifacial, low light environment electric performance is stronger
- PID attenuation can be minimized under conventional conditions
- TUV test certification
- The Half cut cell size M10 is 182 x 91 mm, and using Multiple Bus Bar, which can eliminate the chamfering loss of single crystal



**High Power Output.**



**Better Low-Light performance..**



**M10 TOPCon technology**



**Less Shading Effect**



**0 + 5 W Positive Tolerance**



**PID Resistance**

# SPECIFICATIONS

SR-M72HLProD 570 W SR-M72HLProD 575 W SR-M72HLProD 580 W SR-M72HLProD 585 W SR-M72HLProD 590 W

Number of cells	144 (6 x 24)
Cell type	M10 Monocrystalline - 182 x 91 mm (Multiple Bus Bar)
Maximum system voltage	1500 Vdc

## Electrical Specifications \*

		STC *	NOCT **	STC *	NOCT **	STC *	NOCT **	STC *	NOCT **	STC *	NOCT **
Maximum power	Pmax	570 Wp	430,00 Wp	575 Wp	433,77 Wp	580 Wp	437,55 Wp	585 Wp	441,32 Wp	590 Wp	445,09 Wp
Tolerance		0 / +5 W		0 / +5 W		0 / +5 W		0 / +5 W		0 / +5 W	
Maximum power voltage	Vmpp	42,05 V	39,46 V	42,21 V	39,61 V	42,37 V	39,76 V	42,53 V	39,91 V	42,69 V	40,06 V
Open circuit voltage	Voc	50,89 V	48,61 V	50,09 V	48,80 V	50,28 V	48,98 V	51,49 V	49,17 V	51,67 V	49,35 V
Maximum power current	Impp	13,56 A	10,93 A	13,63 A	10,99 A	13,69 A	11,04 A	13,76 A	11,10 A	13,83 A	11,15 A
Short circuit current	Isc	14,32 A	11,56 A	14,40 A	11,62 A	14,46 A	11,67 A	14,53 A	11,73 A	14,61 A	11,79 A
Module efficiency		22,09 %		22,28 %		22,48 %		22,67 %		22,86 %	

## Temperature Ratings

Open circuit voltage coefficient	Tk Voc	-0,249 % / °C
Short circuit current coefficient	Tk Isc	0,045 % / °C
Power coefficient	Tk W	-0,300 % / °C
Operating Temperature	NOCT	45 °C ±2 °C

## Other specifications


Dimensions	2278 x 1133 x 35 mm
Weight	26,9 Kgr.
Connection box	IP67 - 3 diodes Junction box
Cable	Cable 4 mm2 - 1200 mm
Connector	MC4 or MC4 compatible

\* STC (Standard Test Conditions: 1000 W/m2, 25° C, AM 1.5)

\*\* NOTC (Normal Operating Test Conditions: 800 W/m2, 20° C, Windspeed 1 m/s)

# DOWNLOADS

## SR-M672HLPROD FICHA DATOS / DATA SHEET

 [N-type M10 144 cells 570~595w glass ss bifacial bornay.pdf](#) Size: 362.43 KiB

## IEC 61701 CERTIFICATE

 [IEC 61701 Certificate.pdf](#) Size: 148.42 KiB

## IEC62716 CERTIFICATE

 [IEC62716 Certificate.pdf](#) Size: 147.28 KiB

## IEC60068-2-68 CERTIFICATE

 [IEC60068-2-68 Certificate.pdf](#) Size: 150.91 KiB

## PID IEC62804 CERTIFICATE

 [PID IEC62804 Certificate.pdf](#) Size: 149.47 KiB

## HLPRO SERIES TUV+CE CERTIFICATION

 [HLPPro Series TUV+CE Certification.pdf](#) Size: 1.5 MiB

 Size: B