

DISCOVER

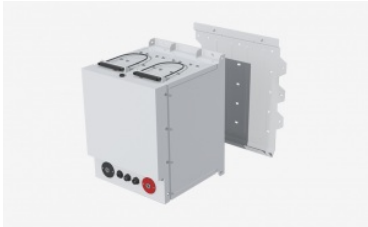
Discover Battery is a world leader in designing and manufacturing transportation, motive power and advanced energy storage solutions.



Bateria Discover 42-48-6650



Bateria Discover 44-24-2800



Bracket bateria litio Discover



Link bateria litio Discover



Link bateria litio Discover

To "discover" means to find something in the course of a search.

At **Discover**, we are always searching for better solutions to **battery and energy storage challenges**. What started as a **battery** distribution business in 1949 has evolved to become a leading innovator and manufacturer of high value **power solutions** delivered and serviced globally through the best distribution partner network in the world.

Success in our market is about delivering excellence with the design, manufacture and supply of **battery** products and **energy storage** solutions that we know will set our Original Equipment and distribution partners apart from their competition and that provide meaningful results and outcomes for their customers.

Discover Advanced Energy Systems lithium batteries offer your the lowest total cost of **energy storage** for **off-grid** and **micro-grid** applications. With a warrantied life of 10 years, and a design of over 20 years, Discover AES batteries will last 3 ~ 5 times longer than traditional lead-acid batteries.

Discover AES lithium batteries are > 25% more efficient than their lead acid equivalents. **Lithium batteries** have 4 times the energy density of lead acid and they require no maintenance.

FEATURES + BENEFITS OF ADVANCED ENERGY SYSTEM (LiFePO4) BATTERIES



JUCE Enhanced Run Time.

- Double the Run Time of Lead Acid Battery
- 100% Usable Capacity
- 100% Depth of Discharge



AEON Extended Service Life.

- Three Times the Life of Lead Acid Battery
- Unlimited Partial State of Charge Cycles
- 10 Year Energy Throughput Stationary Warranty



SENTRY Reliable, Safe, Certified.

- LiFePO4 is Safe and Maintenance Free
- Integrated High Current BMS
- Field Serviceable BMS
- IP 55 Rated
- IEC 62133 Safety
- UL 1973 Safety Certified
- UN 38.3 Transport Certified



PARALLEL POWER Scalable Energy Storage.

- Voltage Specific Models 24V / 48V
- LiFePO4 Energy Storage to Over 120kWh
- Linear Scaling of LiFePO4 Charge and Discharge Capacity
- Integrated System Wide BMS Communication



RUSH Surge Power.

- Power for Off-Grid Inverter Surge Demand
- Peak 2.3C Discharge Rate
- 1C Continuous Discharge Rate



MISER High-Efficiency.

- 30% Less Energy Waste Compared with Lead Acid Battery
- 95% Round Trip Battery Efficiency



RAPICHARGE Fast Charging.

- Reduce Generator Fuel Consumption
- 1C Continuous Charge Rate, Regardless of SoC
- Up to 5x Faster than New Lead Acid Batteries
- Up to 10x Faster than Old Lead Acid Batteries



LYNK
Dynamic Performance Realized.

- Real-Time Optimization of the Charge Rate
- Up to 25% Faster Recharge from 0% to 100% SoC
- Internal BMS Plug-and-Play Configuration with Power Conversion
- BMS Reports SoC and kWh Logs, Fault Logs to System

SPECIFICATIONS

| | 44-24-2800 | 42-48-6650 |
|----------------------------------|------------------------------|------------------------------|
| Electrical Specifications | | |
| Nominal Voltage | 25,6 V | 51,2 V |
| Charge Voltage | 27,2 V | 54,4 V |
| Máximum Voltage * | 29,2 V | 58,4 V |
| Nóminal Capacity (1C) | 110 Ah | 130 Ah |
| Nominal Energy (1C) | 2816 Wh | 6656 Wh |
| Max. Continuous Current | 110 A | 130 Ah |
| Peak Current | 600 Acd for 3 sec | 600 Acd for 3 sec |
| Cell Chemistry | LiFePO ₄ | LiFePO ₄ |
| Charge Temperature ** | 0° / 45° C | 0° / 45° C |
| Discharge Temperature ** | -20° / 50° C | -20° / 50° C |
| Storage Temperature ** | -20° / 45° C | -20° / 45° C |
| Self-Discharge 25°C | < 3% per month (battery off) | < 3% per month (battery off) |
| Mechanical Specifications | | |
| Length (A) | 329,5 mm | 471,5 mm |
| Width (B) | 347,5 mm | 347,5 mm |
| Height (C) | 276 mm. | 375 mm |
| Weight | 40 Kg | 87 Kg |
| Terminal | M8 | M8 |
| Terminal Torque | 9 NM (+/- 3) | 9 NM (+/- 3) |
| Case Material | Steel | Steel |
| IP Rating | IP 55 | IP 55 |

* Do not exceed maximum voltage at the battery terminal

** CAUTION: Extra considerations must be given to depths of discharge, operating voltages and currents when designing systems for use at maximum operating temperatures.

| 44-24-2800 | | | | 42-48-6650 | | | |
|---|--------|--------|---------|---|--------|--------|---------|
| Constant Power - Minutes of Discharge | | | | Constant Power - Minutes of Discharge | | | |
| 500 W | 1000 W | 2000 W | 2500 W | 500 W | 1000 W | 2000 W | 3000 W |
| 337 | 168 | 84 | 68 | 799 | 399 | 200 | 133 |
| Constant Current - Minutes of Discharge | | | | Constant Current - Minutes of Discharge | | | |
| @ 10 A | @ 25 A | @ 50 A | @ 100 A | @ 10 A | @ 25 A | @ 50 A | @ 100 A |
| 660 | 264 | 132 | 66 | 780 | 312 | 156 | 78 |

DOWNLOADS

CATÁLOGO GENERAL 2020

 [Catalogo-Bornay-0520.pdf](#) Size: 21.51 MiB

DISCOVER AES 44-24-2800

 [Discover AES 44-24-2800.pdf](#) Size: 480.82 KiB


OPERATING MANUAL 12-14-42-44

 [OPERATING_MANUAL-12-14-42-44-ies.pdf](#) Size: 1.92 MiB


AES LYNK EDGE CARD VICTRON USER MANUAL

 [AES LYNK Edge Card Victron User Manual.pdf](#) Size: 1.2 MiB

AES LYNK EDGE CARD STUDER USER MANUAL

 [AES LYNK Edge Card Studer Innotec User Manual.pdf](#) Size: 711.3 KiB

ENERGY STORAGE - DISCOVER ADVANCED ENERGY SYSTEMS

 [Energy Storage - Discover Advanced Energy Systems.pdf](#) Size: 1.38 MiB

DISCOVER AES 42-48-6650

 [Discover AES 42-48-6650.pdf](#) Size: 556.9 KiB

AES LYNK COMMUNICATION GATEWAY USER MANUAL

 [AES LYNK Communication Gateway User Manual REV-A.pdf](#) Size: 542.76 KiB

AES LYNK EDGE CARD SMA SUNNY ISLAND USER MANUAL

 [AES LYNK Edge Card SMA Sunny Island User Manual REV-B.pdf](#) Size: 349.37 KiB
